

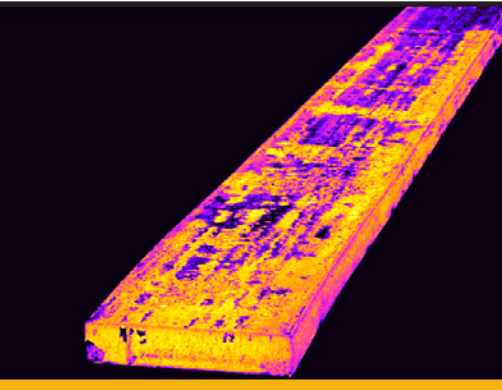
HOT FORMING OF METALS

The Opportunity

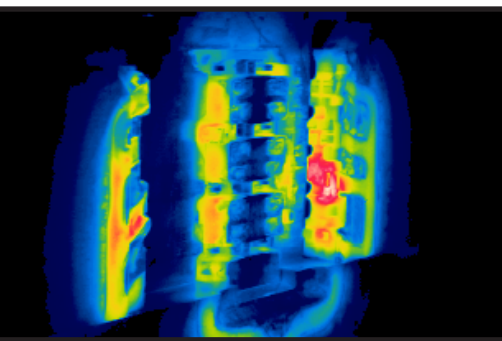
Hot forming operations include e.g. forging, press forging, bending, press hardening and other processes.

Due to the continually increasing quality demands on materials – especially on steel – the requirements regarding the adherence to tight temperature limits in hot forming processes are becoming ever more stringent. In hot forming

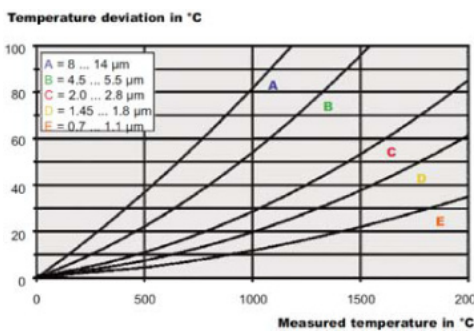
applications, accurate and precise heat treatment temperatures are instrumental in meeting the specified quality requirements and achieving optimum properties of work pieces. In addition, closed-loop process control and improved documentation of measured data are required.



Steel Bar Forging



Press Forming Process



Measurement error with emissivity setting off by 10%

Our Solution

To minimize the systematic measuring errors that may be caused by external influences (e.g. surface variations, reflections), temperatures on metal surfaces should always be measured at the shortest possible wavelengths. This implies that the pyrometers and thermal imagers should measure in the near infrared range, depending on the desired process temperature.

We offer a wide range of system solutions, including short-wavelength pyrometers and thermal imagers, and a fully integrated software solution.

- IMPAC portable pyrometer: IS/IGA 8
- IMPAC process pyrometer IS/IGA 140, IS/IGA50-LO plus, IS/IGA 320
- MIKRON thermal imager MCS640 with LumaSpec™ software
- IMPAC PI 6000 – programmable, fast controller for process control
- Documentation systems IMPAC MultiTemp Logger and TQCS
- Robust cooling jackets and protective enclosures



Your Benefits

- ✓ Highly accurate and very fast temperature measurement
- ✓ Improved process control and management
- ✓ Continuous process temperature monitoring
- ✓ Enable documentation of process temperatures

LumaSense Technologies

Americas and Australia
Sales & Service
Santa Clara, CA
Ph: +1 800 631 0176
Fax: +1 408 727 1677

Europe, Middle East, Africa
Sales & Service
Frankfurt, Germany
Ph: +49 69 97373 0
Fax: +49 69 97373 167

India
Sales & Support Center
Mumbai, India
Ph: +91 22 67419203
Fax: +91 22 67419201

China
Sales & Support Center
Shanghai, China
Ph: +86 133 1182 7766
Fax: +86 21 5039 8096

info@lumasenseinc.com

LumaSense Technologies, Inc., reserves the right to change the information in this publication at any time.

Awakening Your 6th Sense

www.lumasenseinc.com

©2013 LumaSense Technologies. All rights reserved.
AppNote_hot_forming - Rev. 05/17/13